

ABM

Manufacturing



OVERVIEW

ABM's Manufacturing management system is a powerful software suite designed to simplify the process of planning and managing production processes. Integrating accounting, production, ordering, and inventory management, the system can control all aspects of the production and involved accounting process via an intuitive, user friendly interface.

The system is the result of many years experience with a wide range of manufacturing businesses. It is built on up to date technology and is being continually enhanced to keep in step with a rapidly changing business environment. Because ABM's manufacturing system is easy to learn, cost effective and flexible, it quickly becomes an essential part of business's growth strategy.

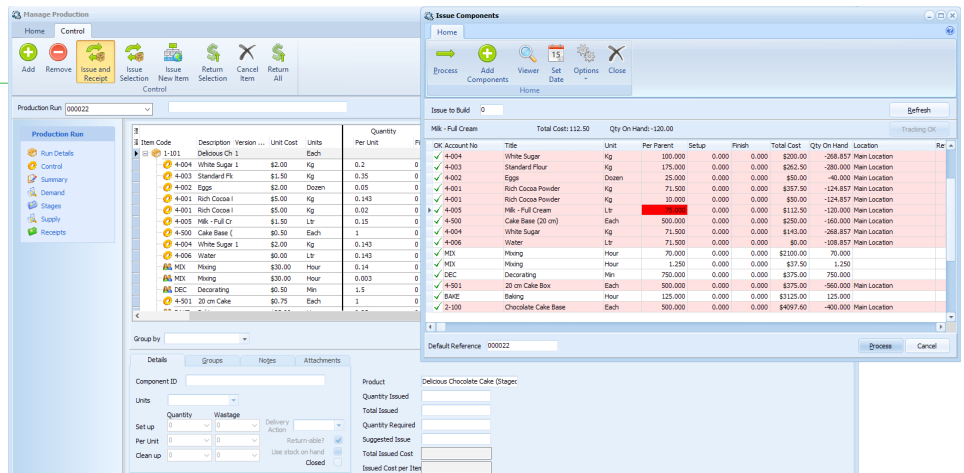
BENEFITS

- » Provide effective process management
- » Reduce time and materials wastage
- » Manage inventory stocks efficiently
- » Enable production flexibility

- » Understand true costs and variances
- » Improve speed and accuracy of quotes
- » Improve planning efficiency
- » Generate comprehensive reports

FEATURES

- » Detailed bill of materials
- » Material requirements planning
- » Real-time inventory control
- » Purchase order generation
- » Reserved stock
- » Serial and lot number tracking
- » Flexible production runs



Australia

www.advancedbusinessmanager.com.au
sales@advancedbusinessmanager.com.au
1800 067 864

New Zealand

www.advancedbusinessmanager.co.nz
contact@advancedbusinessmanager.co.nz
0800 424 9626

MANUFACTURING MODULES

BOM

The manufacturing module makes the task of maintaining detailed bills of components, including sub-assemblies, labour and overheads, for a product easy. BOMs can be manually created within the module or imported from external data files. BOMs can be created, maintained and deleted, and multiple user-definable versions are able to be produced.

PRODUCTION QUOTATION

Users can customise BOM details in response to particular client requirements and then provide a quotation to a client based on the anticipated costs of the customised bill of manufacturing.

Once the quotation has been accepted by the client, it can be converted to planned production runs and a sales order can be raised automatically, demonstrating the convenience in accounting system integration.

EXTENDED PRODUCTION

Extends the production facilities in the standard BOM module to allow management of work in progress. Detailed costs can be entered against a production run as required and all production costs are posted against work in progress accounts until they are either returned to stock or the finished product is received to stock. Work in progress postings are available by BOM, production and components.

CAPACITY PLANNING

Through a visual presentation of production schedules and capacity loads, efficient management of production runs can be achieved. Setup availabilities and output potential for work centres, then link production stages to work centres depending on the stage duration and time available.

Work centres can be graphed to illustrate usage, which allows users to manage workloads effectively to minimise maintenance and breakdowns. Setting up and monitoring the manufacturing capacity of a plant can produce vital feedback to management in regard to necessary expansion or inefficiencies.

JOB ENTRY AND BULK ISSUES

The job entry functionality provides a flexible interface for users who need to enter transactions against multiple production runs.

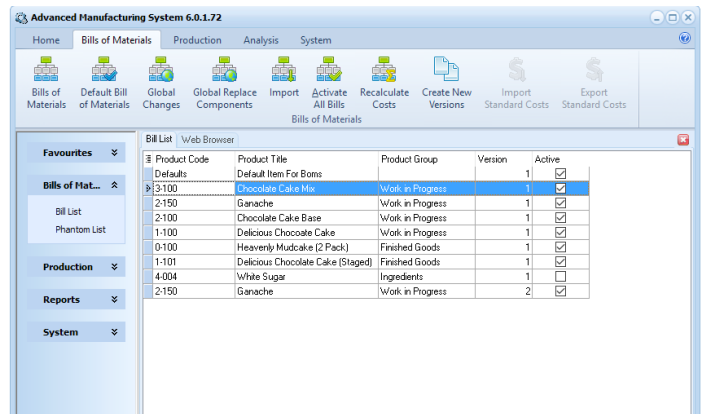
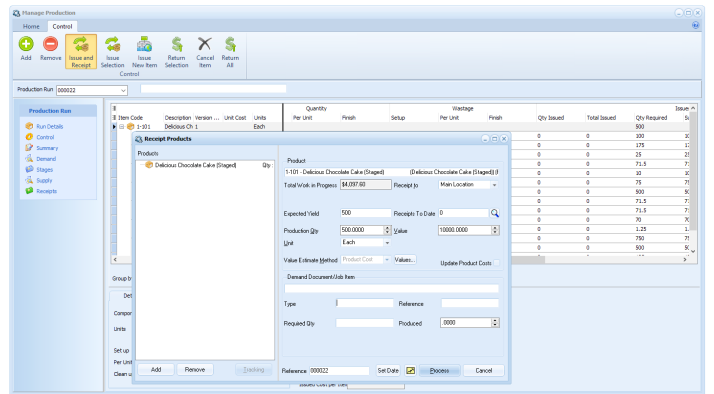
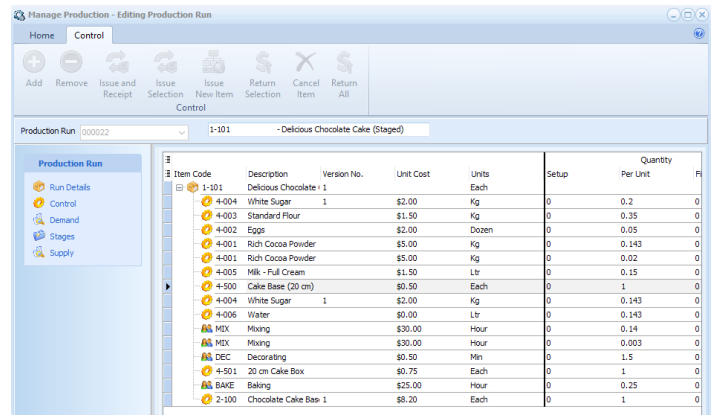
The bulk issues functionality automates the issuing of components to production runs on a bulk basis. It recommends components based on a production run "issue" quantity, set according to actual requirements.

DEMAND AND SUPPLY ANALYSIS, FORECASTING AND MATERIALS PLANNING

Open sales orders, production runs, stock shortages and minimum stock levels can all produce demand. A work order/production run is created to manage the production of finished products from components based on actual or anticipated demand for the product.

Analyse product requirements by examining sales quotations, orders, deliveries, invoices, job quotations and other production runs to produce recommendations for required work orders.

Simplify and speed up the process of purchasing by analysing component demand and taking into account lead times for an inventory item.



Manage your inventory levels based on current and planned production runs, forecasted demand, sales movements and purchase movements.

ABM's manufacturing module also gives the option for one or more production runs to be analysed for shortages and requirements. The module can then interact with the purchasing process in the accounting system to the extent that deliveries may be automatically issued to the appropriate production run.

Users are also able to enter anticipated demand for products into forecasts which interact with BOMs, allowing easy updates to the model for BOM changes.

Australia

www.advancedbusinessmanager.com.au
sales@advancedbusinessmanager.com.au
1800 067 864

New Zealand

www.advancedbusinessmanager.co.nz
contact@advancedbusinessmanager.co.nz
0800 424 9626